

S.M.S.L[®]



FC CE

<http://smsl-audio.com>

S.M.S.L[®]

M9

Manual

Features

Sampling rate PCM support up to 768kHz,
DSD512 native decoding.

Support native DSD decoding.

Using AK4490 as DAC chip, high fidelity and
full-balanced.

TPA6120A2*2 as headphone output AMP
chip which from Texas Instruments.

Built-in asynchronous sample rate converter
function to eliminate DIR clock jitter.

2.5mm balanced output is convenient to plug
with balanced earphone,also can plug with four
pin XLR balanced headphone by switching cable.

Two pieces of ultra low phase noise CRYSTAL
used as audio clock.

High-precision CNC 100% aluminum housing.

Specifications

•Input source:	USB/Optical/Coaxial
•THD+N:	RCA out 0.0004%
	Headphone AMP 0.001%
•Dynamic Range:	115dB
•SNR:	RCA out 110dB
	Headphone AMP 105dB
•USB transmission mode:	Asynchronous
•USB compatibility:	Windows XP/7/8/8.1/10
	Mac OSX 10.6 above
•Bit Depth:	USB 16bit-32bit,1bit
	Optical,Coaxial 16bit-24bit
•Sampling rate:	USB PCM 44.1kHz-768kHz
	USB DSD 2.8224MHz,5.6448MHz
	11.2896MHz,22.5792MHz
	Optical,Coaxial 44.1kHz-192kHz

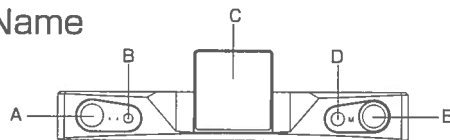
Specifications

- Headphone output power(@THD=0.1%):

Balanced output	32Ω	108mW
	64Ω	104mW
	150Ω	86mW
	300Ω	57mW
Un-balanced output	32Ω	56mW
	64Ω	45mW
	150Ω	28mW
	300Ω	16mW

- RCA output level: 2Vrms
- Consumption power: 5W
- Standby power: 0.1W

Parts Name



A.6.35mm unbalanced

headphone jack

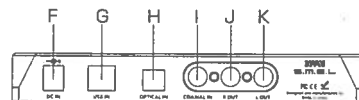
B.2.5mm balanced

headphone jack

C.Screen

D.ON/OFF KEY

E.Knob



F.Power input

G.USB input

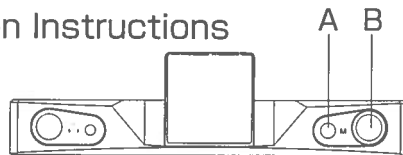
H.Optical input

I.Coaxial input

J.RCA R-Channel output

K.RCA L-channel output

Operation Instructions



A:ON/OFF Key:Short-press is user-defined / Long-press is ON/OFF function.

B:This button's function can be set in the FN-BUTTON menu:Volume control and menu setting.

Knob / Push: Into MENU / Long Push: Return to desktop.

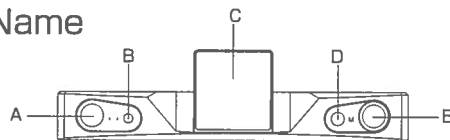
Specifications

- Headphone output power(@THD=0.1%):

Balanced output	32Ω	108mW
	64Ω	104mW
	150Ω	86mW
	300Ω	57mW
Un-balanced output	32Ω	56mW
	64Ω	45mW
	150Ω	28mW
	300Ω	16mW

- RCA output level: 2Vrms
- Consumption power: 5W
- Standby power: 0.1W

Parts Name



A.6.35mm unbalanced

headphone jack

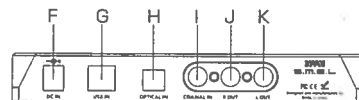
B.2.5mm balanced

headphone jack

C.Screen

D.ON/OFF KEY

E.Knob



F.Power input

G.USB input

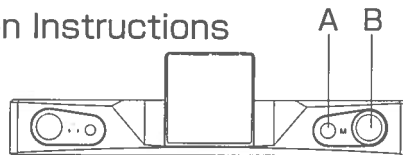
H.Optical input

I.Coaxial input

J.RCA R-Channel output

K.RCA L-channel output

Operation Instructions



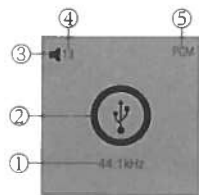
A:ON/OFF Key:Short-press is user-defined / Long-press is ON/OFF function.

B:This button's function can be set in the FN-BUTTON menu:Volume control and menu setting.

Knob / Push: Into MENU / Long Push: Return to desktop.

Desktop Screen

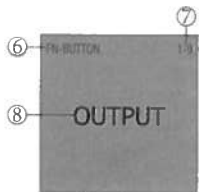
When this unit power on, the unit will go into "desktop" mode, as figure 1.



- 1.Sampling rate of input signal.
- 2.Input source icon, here can be USB/COAXIAL/OPTICAL.
- 3.Output Mode icon . When the output mode is headphone, it shows . When the output mode is RCA, it shows .
- 4.Volume
- 5 .Music format you are receiving.
Here can be PCM or DSD.

MENU SCREEN:

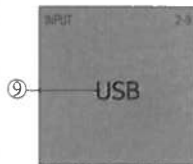
User-defined function menu(figure 2)



- 6.The name of this menu page. This page is FN-BUTTON
- 7.The page number and total page number.
- 8.This page is to set the function of the FN button(Short press the ON/OFF button):
For example: set this page to info, and then press the ON/OFF button, the screen will shows the status of this unit.

INPUT↔OUTPUT↔MUTE↔SOUND↔FILTER
INFO↔PHASE↔PRE↔ASRC

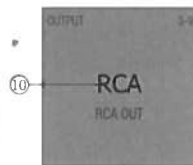
Input mode Menu (Figure 3)



9.INPUT: To select the input source between coaxial, optical and USB. 3 input sources.

COAX↔OPTI↔USB

Output mode Menu(Figure 4)

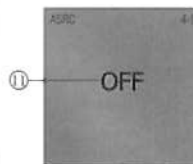


10.OUTPUT: To select the output port of audio signal. There is 3 kinds of output.

RCA↔HP-B↔HP-UB

Note: HP-B means the 2.5mm balanced headphone output.
HP-UB means the 6.35mm unbalanced headphone output.

Upsampling selection menu(Figure 5)



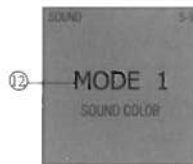
11.ASRC: To select the internal sampling frequency go into the DAC, and the ASRC also can kill the jitter of DIR interface, it is very good for sound quality.

OFF↔44.1↔88.2↔176.2

Note: OFF↔48↔96↔192

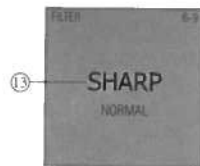
1. The ASRC will auto bypass when input sampling frequency > 192kHz and DSD.
2. When input sampling frequency is multiple of 44.1kHz, it can only set to the multiple of 44.1kHz.

Tone Mode(Figure 6)



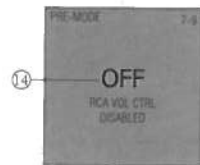
12.Sound: To select the mode of sound color which build-in the AK4490, Default is mode 1, there is a little difference between the 3 modes.

Filter Mode(Figure 7)



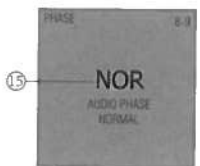
13.Filter: To select the digital filter mode of DAC. 4 kinds of filter modes.

PRE FUNCTION MENU(figure 8)



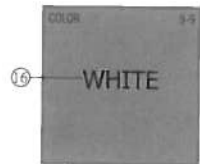
14.M9 featured with PRE function which can be on or off under this menu.

Phase setting Menu(figure 9)



15.Output phase can be setted according to users requirements.

Font color change(Figure 10)



16. There are six kind of color for selection. Easily changing color by revolving menu knob.

WHITE → RED → GREEN
PURPLE → YELLOW → BLUE

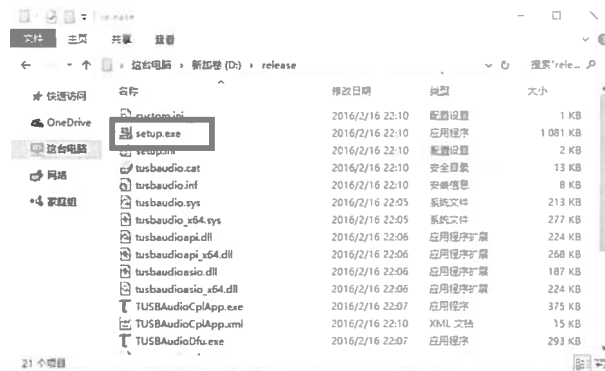
M9 USB driver installation

Read before installation:

- Following file is suitable only for window 7/8/8.1/10 user.
- Max OS X user needn't to install this driver.

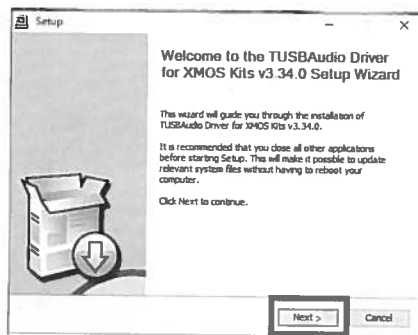
Installation steps.

1.Click driver folder,Double-click "setup.exe"

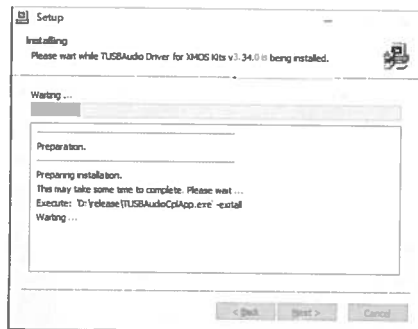


M9 USB驱动安装

2.Click "next" into next step.

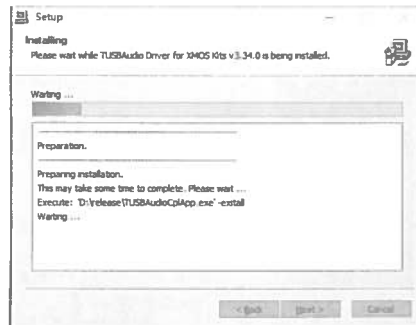


3.Keep default installation column and click "install".

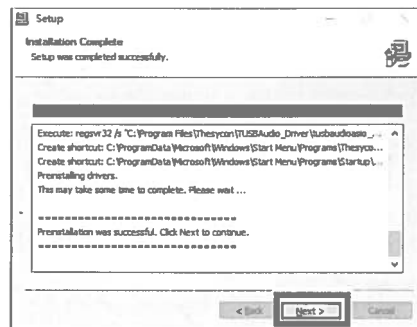


M9 USB驱动安装

4.Installing.

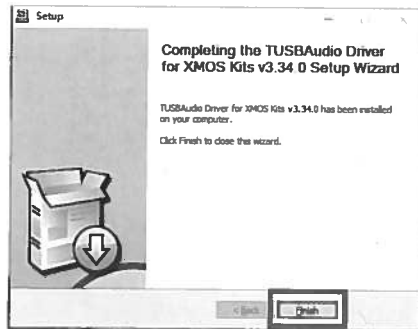


5.Click"Next"into next step.

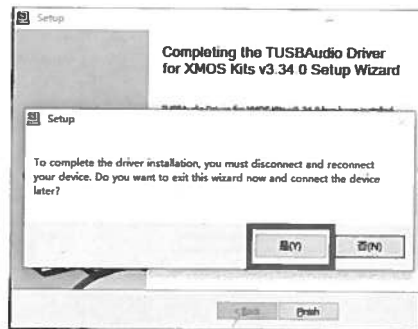


M9 USB驱动安装

6.Installation finished, click "Finish".



7.Select "Yes" after installation finished.



M9 DSD Player

1.Installation instruction:

- This driver is network shareware, rights belong to owner!
Using foobar2000 play DSD format files need following two plug-in. The two plug-in are provided in disk.



ASIO插件



DSD插件

- After installing foobar2000, the icon of components will become foobar style.
- This instruction only suitable for windows XP/7/8/8.1/10 user.
- Mac OS X user needn't install this driver.

2.Installation steps:

Install DSD plug-in

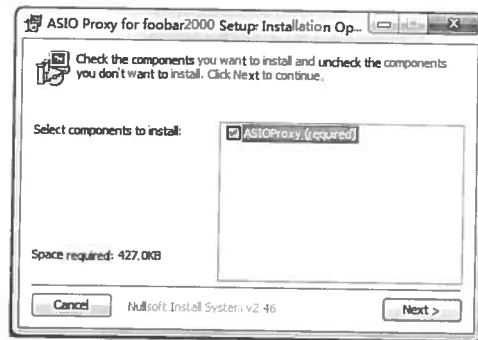
- 1.Double click "ASIOProxyInstall-0.7.1.2.exe" under "DSD plug-in" folder, and then install it.



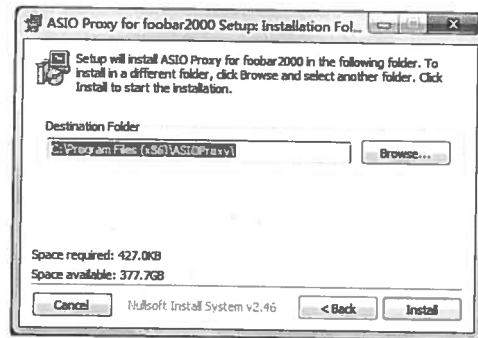
M9 DSD Player

2.Installation steps:

2. Click "next"

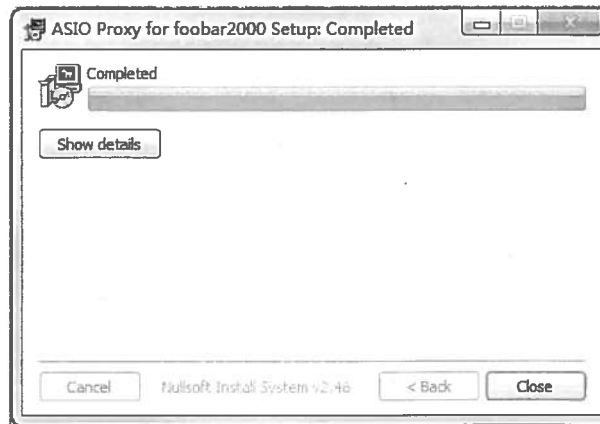


3.Select installation route(using default route), and click "Install"



M9 DSD Player

4.Installation finished, choose "close".



•Install SACD Plug-in

Double click "foo_input_sacd. fb2k-component" from DSD plug-in folder

→ single click "Y"

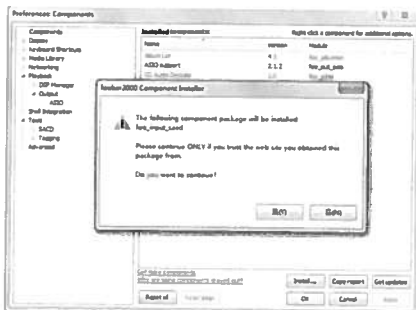
→ single click "N"

Other plug-ins like "foo_out_asio" "WASAP" can be installed by same way.

More plug-in download from foobar2000 official website:

<http://www.foobar2000.org/download>

M9 DSD Player

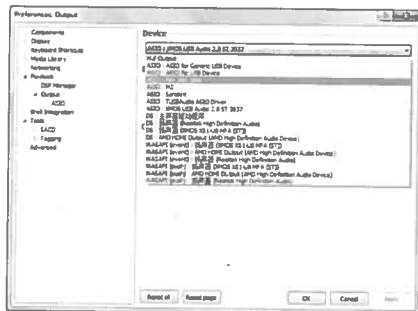


3.DSD playback settings:

NOTE :

Please set the system volume to MAX when playing DSD Music.

1. Open Foobar2000, and find out "Files→Preference→Playback→Output→Device"
Set as "ASIO: foo_dsd asio"

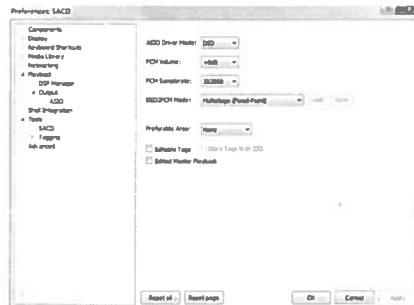


M9 DSD Player

2. Find out "Flies→Preference→Output→ASIO→ASIO device"
Double click "foo_dsd_asio"



3.Flies→Preference→Tools→SACD, Set DSD under "ASIO Driver Mode" other settings check below picture.



Factory Reset:

Connect the DC cable while pressing " ⏻ " key of the M9 untill screen shows LOGO.

Warranty terms

(1) The term of service

Shenzhen ShuangMuSanLin Electronics Co., LTD promise good quality products. If product is defective unit by normal use with in 7 days after purchasing. The customer can choose to return or repair warranty (does not affect the secondary sales after they can return).

Faulty for free with in one year warranty normal use.

(2) Date of purchase is in accordance with invoice date or receipt date issued by seller, online shopping can cut trade shots.

(3) Following situation can not enjoy "Three Guarantees" service"

- a. All damages by human factors, including use it under nonrmal working environ-ment the and not following manual instruction.
- b. User privately disassemble, modification, maintenance.
- c. Use non-designated or approved accessories cause damage.
- d. QC or warranty stickers damage on cabinet.
- e. Can not provide a valid purchasing prove.
- f. Not belong to SMSL product.

(4) How to warranty

This term is only suitable for china mainland, other regionplease refer to the policy of the local sales agents and national regulations.